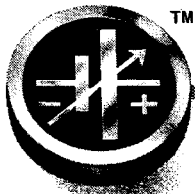


INSTRUCTION MANUAL



KEPCO

**ENCLOSURES AND
HARDWARE SYSTEMS**

**RA-24
RACK ADAPTER**

GENERAL DESCRIPTION (Refer to FIG. 1)

The Kepco Model RA-24 RACK ADAPTER accepts Kepco "quarter-rack" and "half-rack" power supplies and can be mounted either permanently or by means of chassis slides, into a standard (19") rack. The RA-24 bottom shelf is predrilled for the mounting hole patterns of the installed Kepco supplies. The mounting is accomplished by using coarse-threaded (8-18) flat-head screws through the bottom shelf of the RA-24 into the nylon expansion bushings on the Kepco Power Supplies. The RA-24 Rack Adapter occupies 5¼ inches of vertical space in the standard 19-inch equipment rack. The rear panels of the mounted power supplies are readily accessible when mounted onto the RA-24 for wiring to and from the equipment. Optional accessory components for the RA-24 Rack Adapter include BLANK FILLER PANELS, designed to occupy unused front panel spaces in the RA-24 Rack Adapter, CUTOUT PANELS to adapt Kepco unmetered equipment for installation into the RA-24 Rack Adapter and a FILLER SUPPORT BRACKET to mount under the RA-24 Rack Adapter if the total load exceeds 75 lbs. (See page 4 for further details).

The Kepco Model RA-24B RACK ADAPTER is identical to the Model RA-24, except its bottom shelf is blank for custom installations (front row of mounting holes for Kepco Filler Panels are provided).

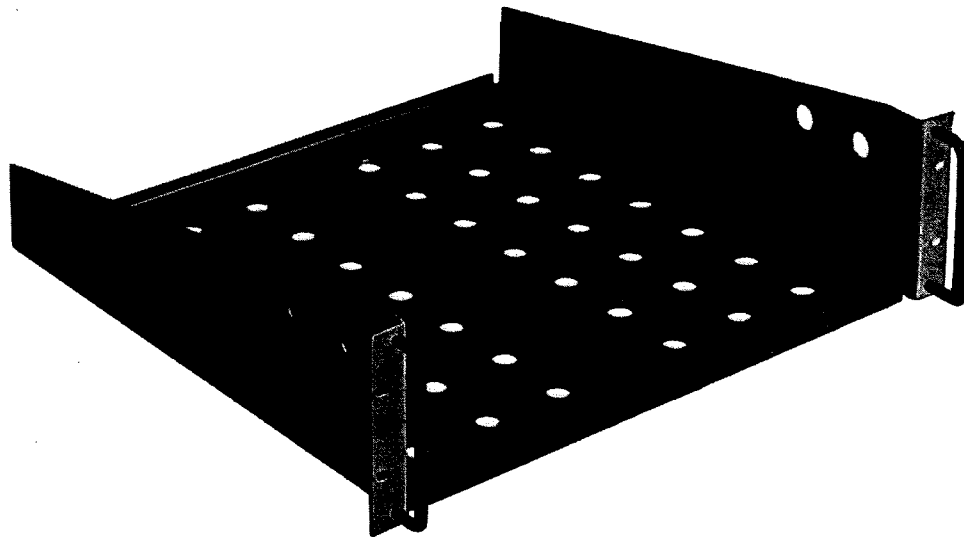


FIG. 1 KEPCO MODEL RA-24 RACK ADAPTER (MODEL RA-24B HAS A BLANK BOTTOM SHELF FOR CUSTOM INSTALLATIONS).

INSTALLATION OF THE RA-24 INTO THE EQUIPMENT RACK

The Kepco Model RA-24 Rack Adapter may be rigidly mounted to the equipment rack, or it can be mounted with chassis slides. The front flanges of the RA-24 are drilled for standard (2¼") mounting hole dimensions while the sides are drilled and tapped for "JONATHAN" slides (See FIG. 3).

INSTALLATION OF KEPCO EQUIPMENT INTO THE RA-24 RACK ADAPTER (Refer to FIG. 2)

The bottom shelf of the RA-24 Rack Adapter is predrilled for mounting a maximum of either two (2) half-rack or four (4) quarter-rack models. A variety of mounting configurations are possible, some of which are indicated in FIG. 2. Unused front panel spaces in the RA-24 can be covered with (optional) filler panels, listed in the ACCESSORY paragraph. Heavy loads (above ≈ 75 lbs.) should be supported by horizontal brackets across the bottom surface of the RA-24. Suitable support brackets, which mount directly under the lower front edge of the RA-24, can be obtained from Kepco. (See ACCESSORY paragraph).

INSTALLATION OF KEPCO EQUIPMENT INTO THE RA-24B RACK ADAPTER (Refer to FIG. 2)

The bottom shelf of the RA-24B Rack Adapter is blank, except for the front holes, used to install Kepco Filler Panels. All other mounting and ventilating holes must be drilled by the customer.

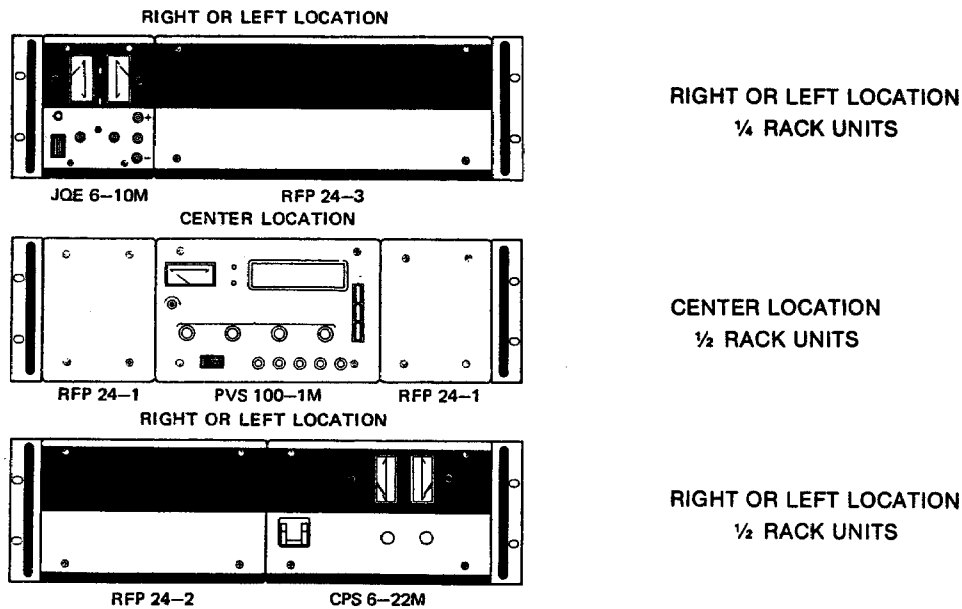


FIG. 2 SAMPLE MOUNTING CONFIGURATIONS.

INSTALLATION PROCEDURE.

- 1) Prepare the equipment to be installed by removing the bottom feet, side brackets and bail if so equipped.
- 2) Refer to FIG. 3 "Mechanical Outline Drawing". The "Installation Table" in FIG. 3 lists the Kepco equipment which can be installed into the RA-24 and the associated mounting hole pattern.
- 3) Use four (4) of the supplied mounting screws per unit to be installed and fasten unit to the RA-24.

NOTE: The mounting screws are 8/18 x 5/8" coarse threaded flat-head screws which mate through the bottom shelf of the RA-24 with the plastic expansion bushings on the bottom of each Kepco unit.

- 4) Install (optional) filler panels, filler support brackets and chassis slides as required. The mounting holes for these components are identified in the "Installation Table" in FIG. 3.

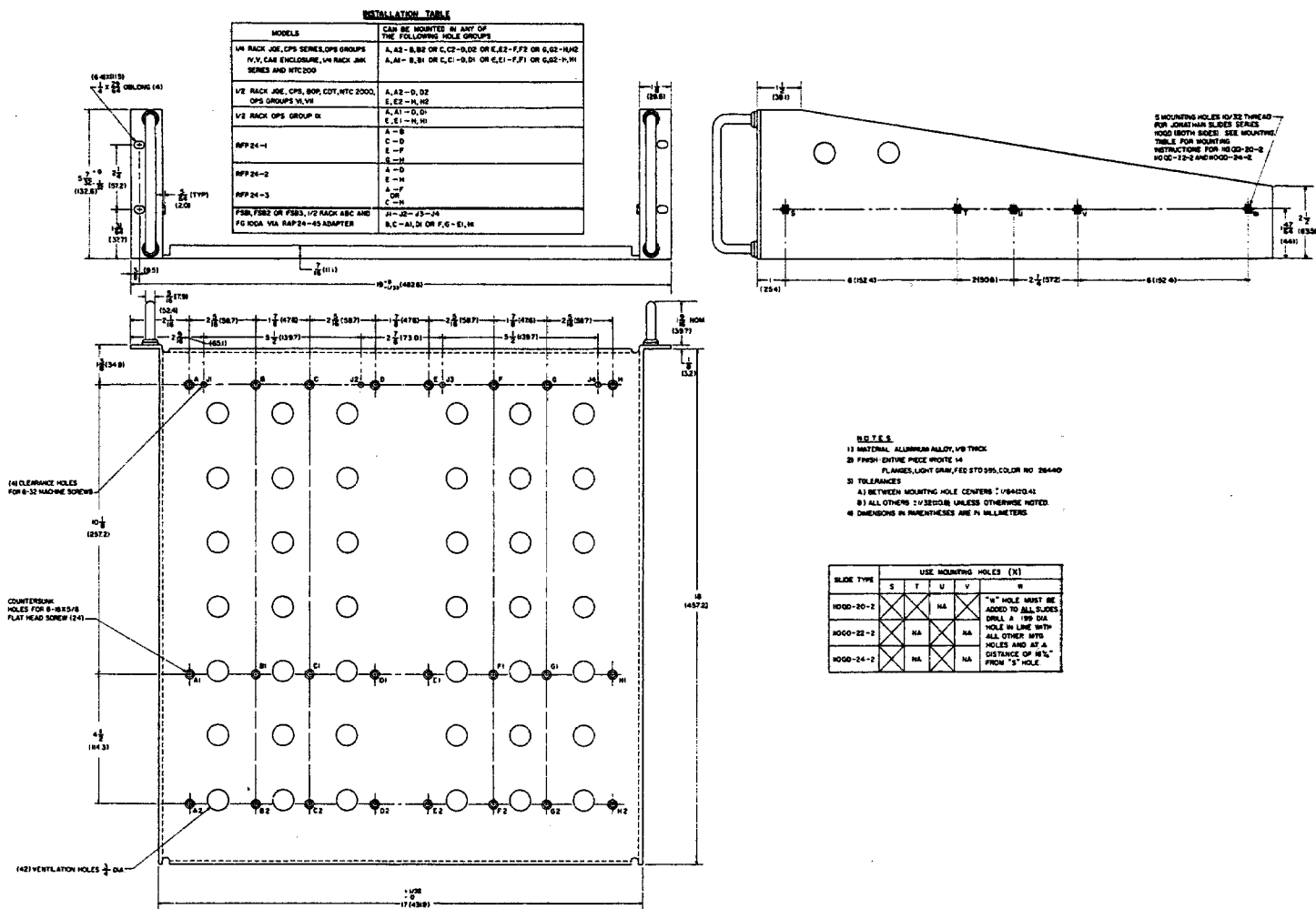


FIG. 3 MECHANICAL OUTLINE DRAWING.

NOTE: Models RA-24 and RA-24B have identical mechanical dimensions. The shelf bottom of the Model RA-24B is blank, except for holes A, J1, B, C, J2, D, E, J3, F, G, J4 and H, used for Kepco Filler Panels. (refer to "Installation Table".)

AVAILABLE ACCESSORIES (NOT SUPPLIED, SEE FIG. 4)⁽¹⁾

- a) **KEPCO FILLER PANELS.** These panels are mounted into pre-threaded holes on the bottom shelf of the RA-24. They are designed to cover unused front panel spaces in the rack adapter:
 - 1) KEPCO MODEL RFP 24-1 FILLER PANEL (ONE SPACE).
 - 2) KEPCO MODEL RFP 24-2 FILLER PANEL (TWO SPACES).
 - 3) KEPCO MODEL RFP 24-3 FILLER PANEL (THREE SPACES).
- b) **KEPCO CUTOUT PANELS.** These panels are mounted onto Kepco's **meterless** equipment modules to prepare them for installation into the rack adapter:
 - 1) KEPCO MODEL RAP 24-1 PANEL ADAPTER (FOR ¼ RACK CPS MODELS).
 - 2) KEPCO MODEL RAP 24-1J PANEL ADAPTER (FOR ¼ RACK JQE MODELS).
 - 3) KEPCO MODEL RAP 24-2 PANEL ADAPTER (FOR ½ RACK CPS MODELS).
 - 4) KEPCO MODEL RAP 24-2B PANEL ADAPTER (FOR ½ RACK BOP MODELS).
 - 5) KEPCO MODEL RAP 24-2J PANEL ADAPTER (FOR ½ RACK JQE MODELS).
 - 6) KEPCO MODEL RAP 24-45 PANEL ADAPTER (FOR ABC AND FG MODELS).
- c) **KEPCO FILLER SUPPORT BRACKETS.** These brackets should be used whenever the total load in an RA-24 exceeds 75 lbs:
 - 1) KEPCO MODEL FSB-1 FILLER SUPPORT BRACKET (1¾" High).
 - 2) KEPCO MODEL FSB-2 FILLER SUPPORT BRACKET (3½" high).
 - 3) KEPCO MODEL FSB-3 FILLER SUPPORT BRACKET (5¼" high).

SUPPLIED ACCESSORIES

(16) 8-18 x 5/8, self-tapping, flat-headed screws, for mounting up to four (4) units to the RA-24 Rack Adapter.

⁽¹⁾ All listed accessories for the Model RA-24 are equally suitable for the Model RA-24B.

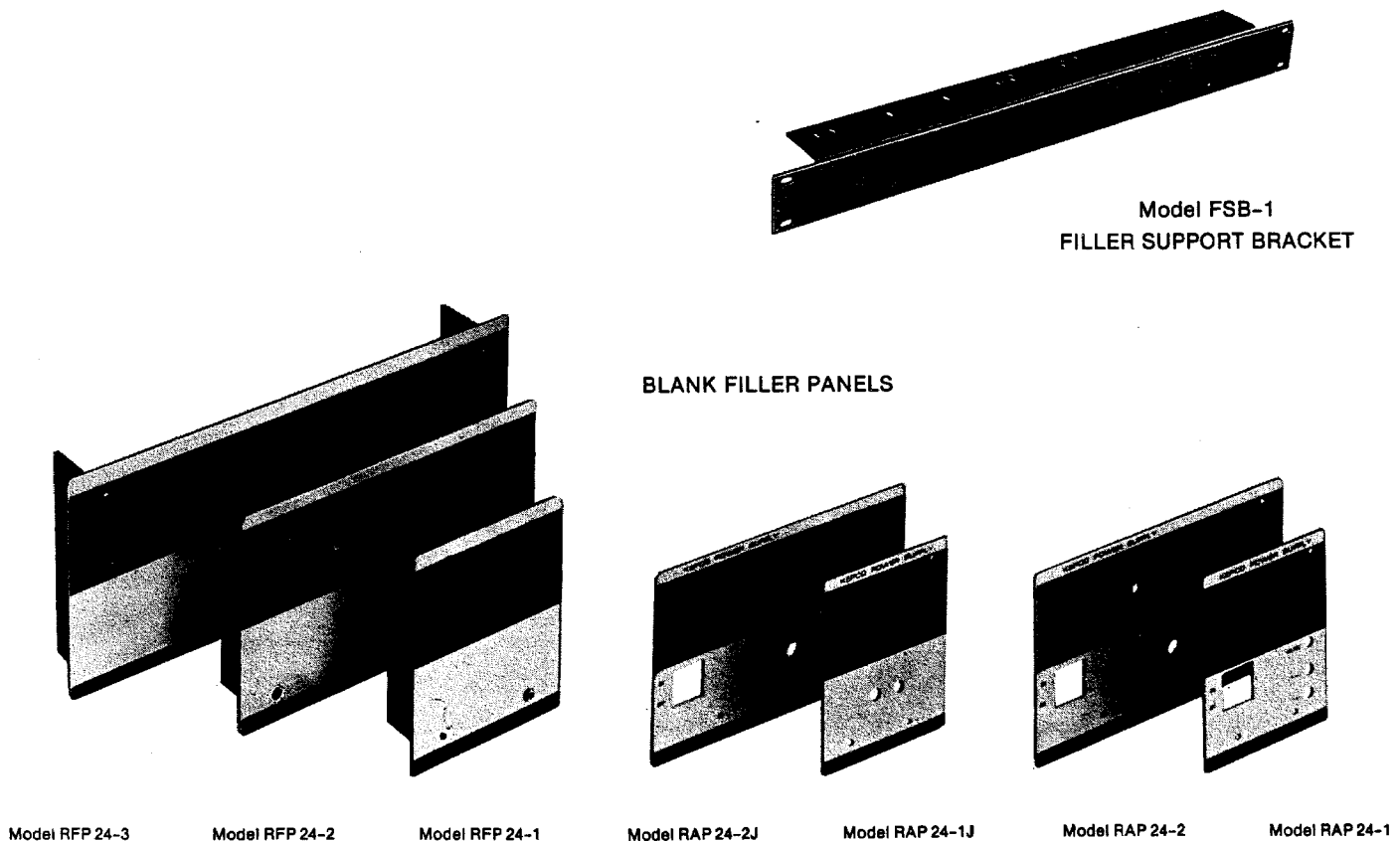


FIG. 4 OPTIONAL ACCESSORIES FOR THE RA-24 RACK ADAPTER.